

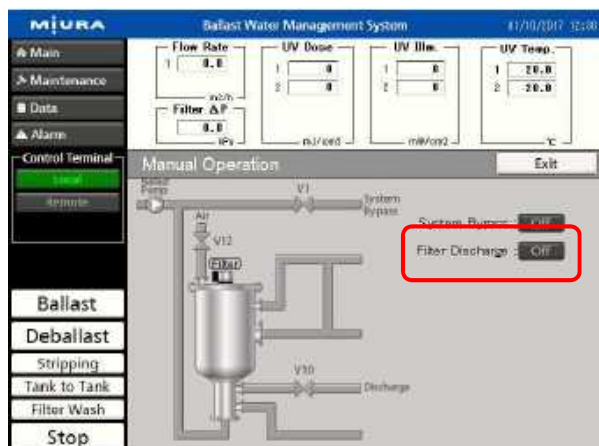
How to clean filter element (HK-A,AC,C,R type)

Dec.8, 2020

- (1) Be sure that air pressure for discharging water is 0.2 MPa with the pressure gauge on top of the filter unit.

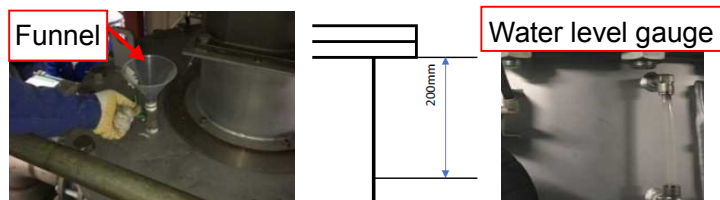
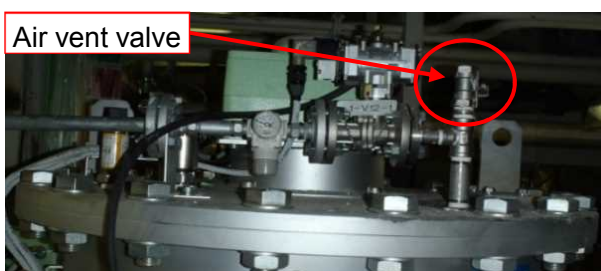


- (2) Press "Filter Discharge" button on the Manual Operation screen to discharge water in the filter unit.
The discharge time differs depending on the types.



- (3) Inject fresh water through the air vent valve using a funnel. Supply fresh water until the water level is 200 mm below the top of water level gauge to secure volume of the Scale Destroyer and Alkaline Agent.

*Do not inject fresh water from the hose directly, but be sure that air can be released.



<Table 1> Necessary amount of Scale Destroyer and Alkaline Agent

Filter type	For 8 hours	For 24 hours
HK-200,300FA	4 kg	2 kg (1 bag)
HK-300F,450FA	8 kg	4 kg (2 bags)
HK-450F,600FA	12 kg	6 kg (3 bags)
HK-600F,900FA	16 kg	8 kg (4 bags)
HK-900F	24 kg	12 kg (6 bags)

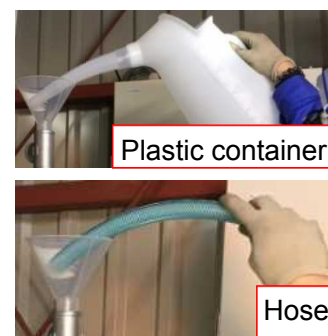
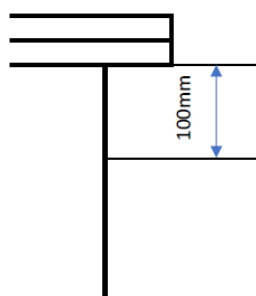
*When using seawater, increase the amount of Scale Destroyer and Alkaline Agent by 1.1 times.

- (4) Fill container with fresh water and dissolve the Scale Destroyer in accordance with Table 1.
Also, dissolve additional Scale Destroyer for the piping from the filter inlet/outlet flange to V2 and V3 based on Table 2.

- (5) Supply the solution made in step (4) through the air vent valve using a funnel.

- (6) Supply fresh water until the water level is 100 mm below the top of water level gauge.

*Do not inject fresh water from the hose directly, but be sure that air can be released.



- (7) After the setting time, dissolve the Alkaline Agent in fresh water in accordance with Table 1 and 2, and add to the filter unit. Neutralize until the pH reaches 7 while checking with a pH test paper.

- (8) Press "Filter Discharge" button on the Manual Operation screen to discharge water in the filter unit.

*Discharge the water immediately after adding the Alkaline Agent.

*After discharge, check that the filter differential pressure is less than 20 kPa in automatic operation.

【Caution】

- The water in the filter may spurt out due to a chemical reaction when injecting the solution, so wear a protector.
- If the filter differential pressure does not decrease below 20 kPa even after cleaning the filter element, contact MIURA engineers.

<Table 2> Additional amount of Scale Destroyer and Alkaline Agent for pipe length from filter inlet/outlet flange to V2 and V3

Pipe diameter	For 8 hours	For 24 hours
250A	0.4 kg/m	0.2 kg/m
300A	0.6 kg/m	0.3 kg/m
350A	0.8 kg/m	0.4 kg/m
400A	1.0 kg/m	0.5 kg/m
450A	1.2 kg/m	0.6 kg/m