

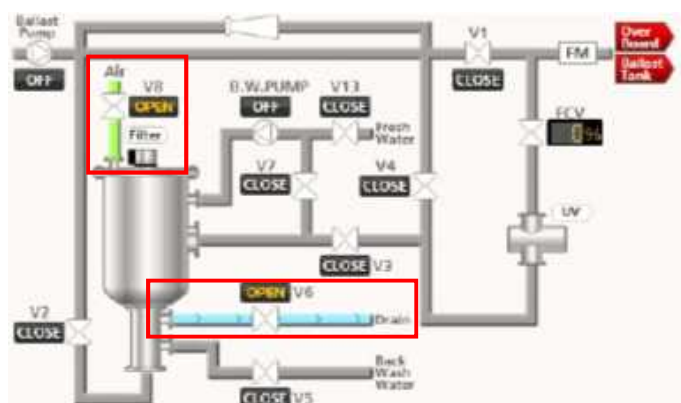
How to clean filter element (HK type)

Dec.8, 2020

- (1) Be sure that air pressure for discharging water is 0.2 MPa with the pressure gauge on top of the filter unit.

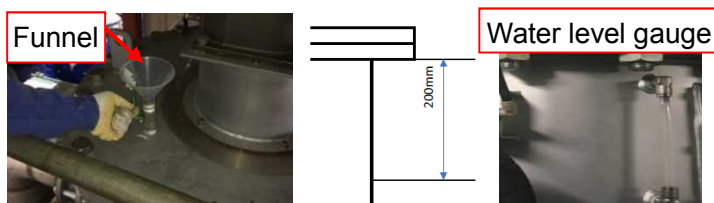
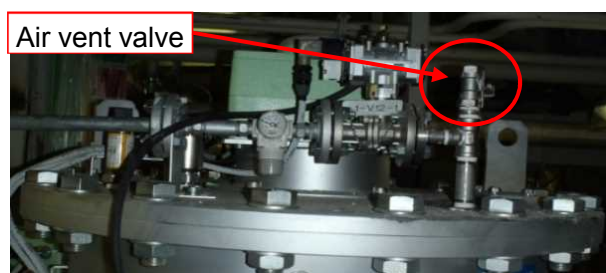


- (2) Open the air inlet valve (V8) and filter wash discharge valve (V6) on the Manual Operation screen to discharge water in the filter unit. The discharge time differs depending on the types.



- (3) Inject fresh water through the air vent valve using a funnel. Supply fresh water until the water level is 200 mm below the top of water level gauge to secure volume of the Scale Destroyer and Alkaline Agent.

*Do not inject fresh water from the hose directly, but be sure that air can be released.



<Table 1> Necessary amount of Scale Destroyer and Alkaline Agent

Filter type	For 8 hours	For 24 hours
HK-200,300FA	4 kg	2 kg (1 bag)
HK-300F,450FA	8 kg	4 kg (2 bags)
HK-450F,600FA	12 kg	6 kg (3 bags)
HK-600F,900FA	16 kg	8 kg (4 bags)
HK-900F	24 kg	12 kg (6 bags)

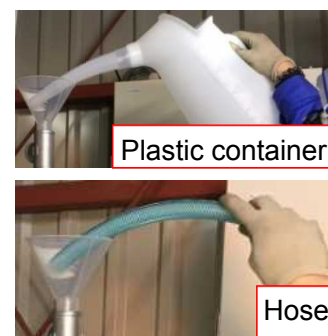
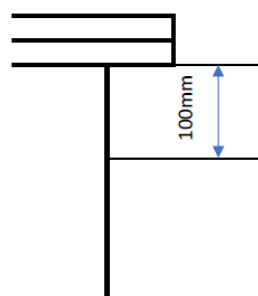
*When using seawater, increase the amount of Scale Destroyer and Alkaline Agent by 1.1 times.

- (4) Fill container with fresh water and dissolve the Scale Destroyer in accordance with Table 1. Also, dissolve additional Scale Destroyer for the piping from the filter inlet/outlet flange to V2 and V3 based on Table 2.

- (5) Supply the solution made in step (4) through the air vent valve using a funnel.

- (6) Supply fresh water until the water level is 100 mm below the top of water level gauge.

*Do not inject fresh water from the hose directly, but be sure that air can be released.



- (7) After the setting time, dissolve the Alkaline Agent in fresh water in accordance with Table 1 and 2, and add to the filter unit. Neutralize until the pH reaches 7 while checking with a pH test paper.

- (8) Open the air inlet valve (V8) and filter wash discharge valve (V6) on the Manual Operation screen to discharge water in the filter unit.
*Discharge the water immediately after adding the Alkaline Agent.
*After discharge, check that the filter differential pressure is less than 20 kPa in automatic operation.

【Caution】

- The water in the filter may spurt out due to a chemical reaction when injecting the solution, so wear a protector.
- If the filter differential pressure does not decrease below 20 kPa even after cleaning the filter element, contact MIURA engineers.

<Table 2> Additional amount of Scale Destroyer and Alkaline Agent for pipe length from filter inlet/outlet flange to V2 and V3

Pipe diameter	For 8 hours	For 24 hours
250A	0.4 kg/m	0.2 kg/m
300A	0.6 kg/m	0.3 kg/m
350A	0.8 kg/m	0.4 kg/m
400A	1.0 kg/m	0.5 kg/m
450A	1.2 kg/m	0.6 kg/m