

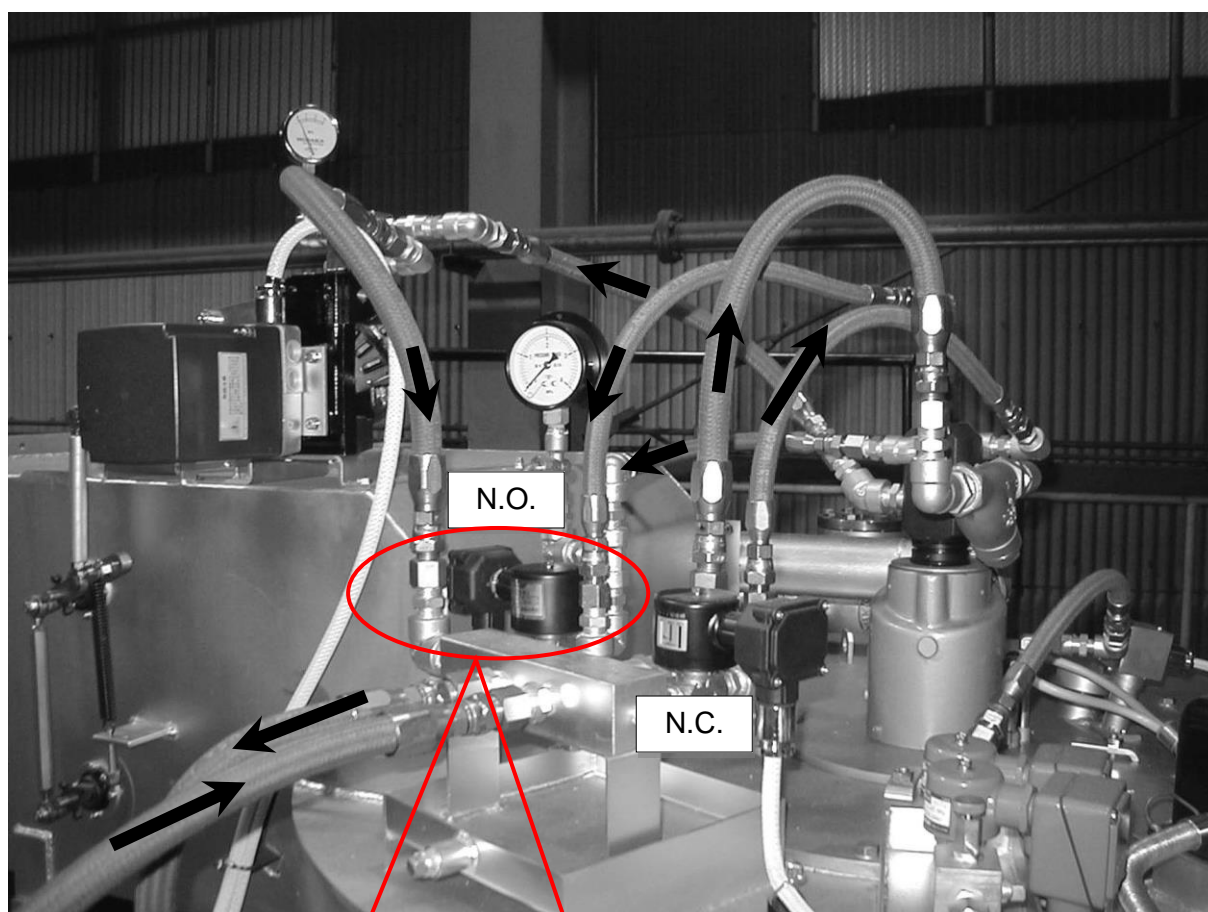
# Service News



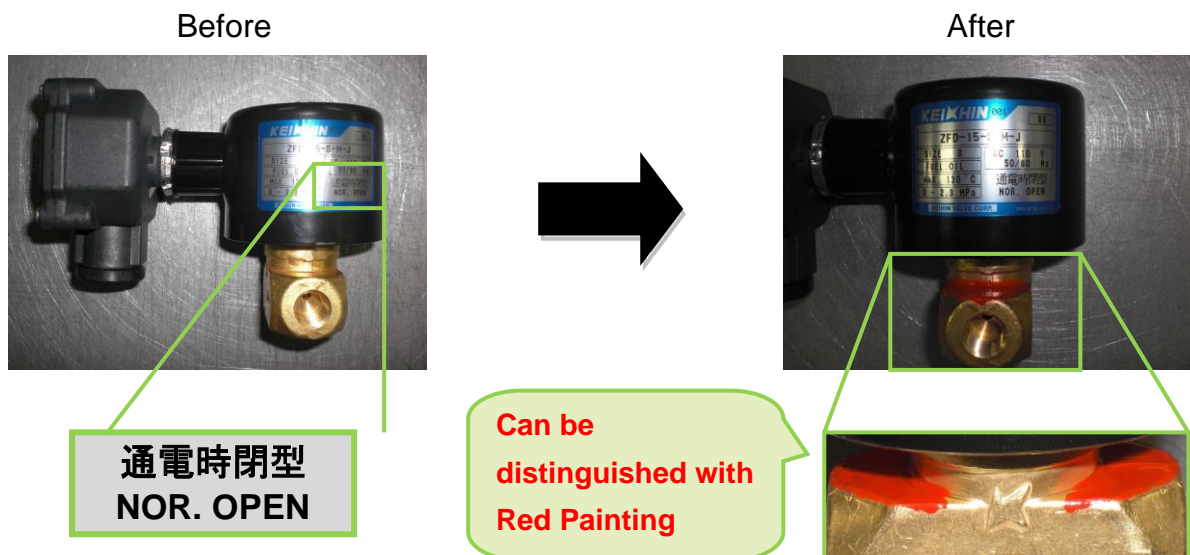
## Prevention of F.O. Solenoid Valve Installation Mistake

There was serious accident before that Normally Open (N.O.) and Normally Close (N.C.) was installed wrongly on type HB boiler at F.O. solenoid valve replacement. Although name plate is printed in both of Japanese and English, there are some cases that it can not be distinguished because coil part with name plate is taken off at installation and replacement, or difference of appearance can not be noticed and it is installed wrongly.

As prevention of these trouble, valve body of Normally Open (N.O.) is painted **Red** to distinguish Normally Open (N.O.) and Normally Close (N.C.) on valve itself.



Solenoid valve of Normally Open (N.O.) is painted red.



Solenoid Valve Type	Old Parts Code	New Parts Code	Power Supply
ZFD-15-S-M-J	0000-000-H853-0	0000-AKD-0613-0	AC110V
	0000-AA7-0704-0	0000-AKD-0614-0	AC220V

\*Solenoid Valve (Type; ZFD-15-H-J) of Normally Close (N.C.) has no change.

We would like you to order spare parts with new parts code.

Scan the QR code or click on the following URL for information about our service network.

<https://www.miuraz.co.jp/en/marine/service/network.html>



If you have any questions, please contact nearest MIURA's office.

We hope to receive your continuous support in the future.