

Service News

Operation Mode Selection of Ballast Water Management System

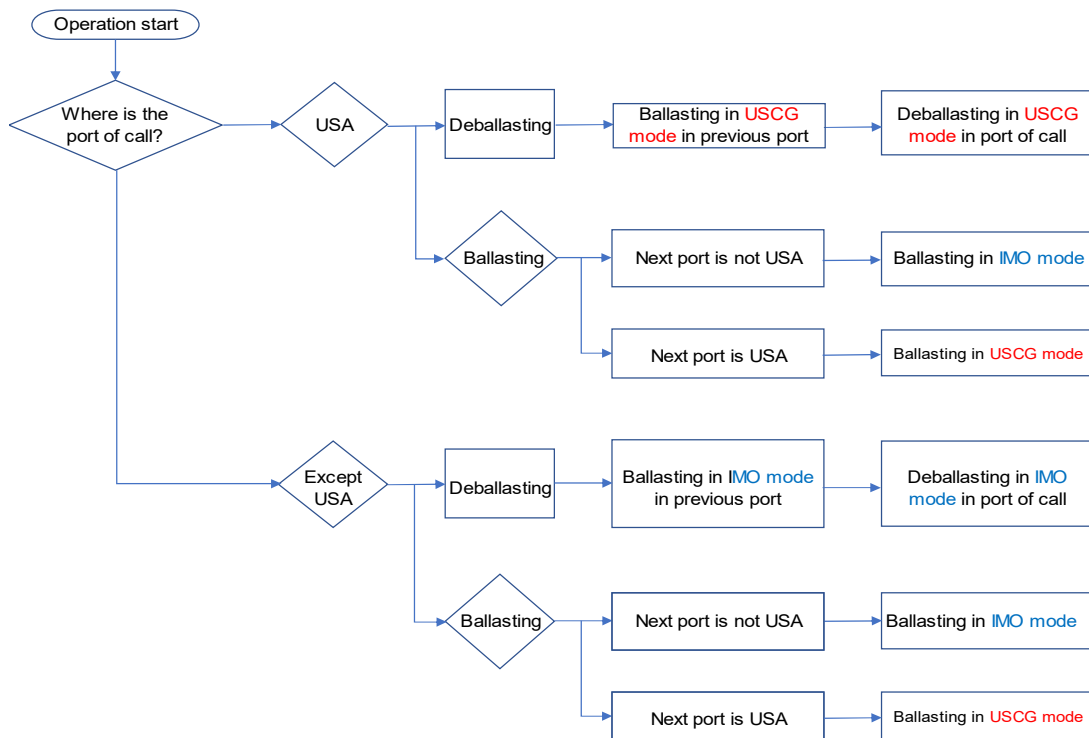
We will explain about the operation modes of our ballast water management system USCG-TA (type approval) models and how to select the appropriate operation mode.

HK-C/EC and HK-R/ER, which are USCG-TA models, have two operation modes, for IMO specification and USCG specification. If you make a mistake in selecting the operation mode, you may not be able to discharge ballast water in USA ports. This is a very important operation, so take this opportunity to read this article.

How to select operation mode

Follow the flowchart below to switch the operation mode of the ballast water management system. (The UV irradiation level differs depending on the mode.)

Refer to the attached document (excerpt from our operation manual) for the procedure of switching the operation mode.



Select the appropriate operation mode to ensure proper ballast water discharge.

If you have any questions, please contact the nearest MIURA office.

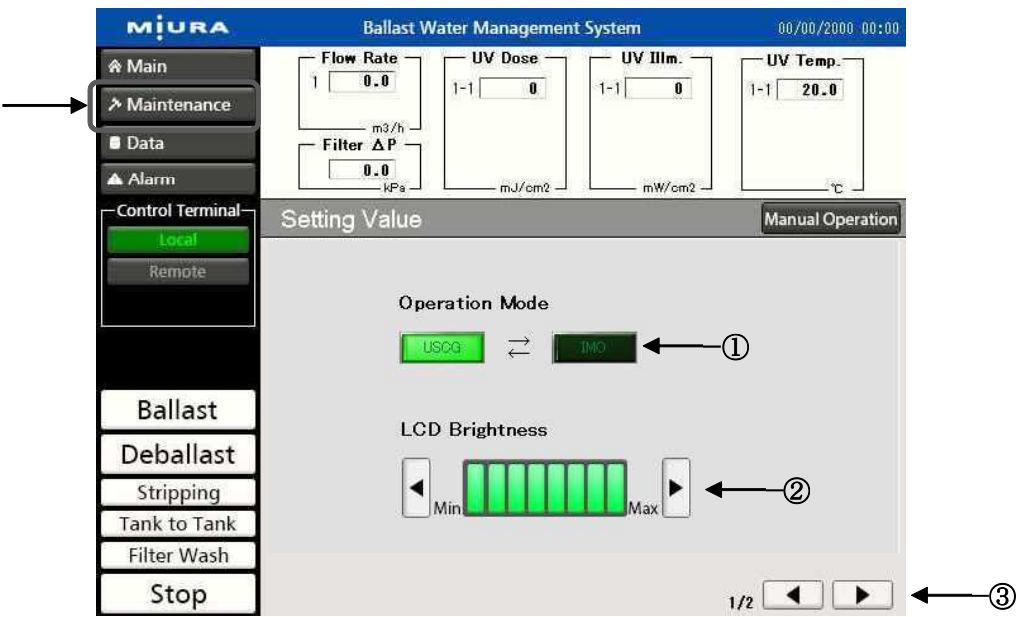
9.Setting Value screen operation

In Setting value screen, operation mode and LCD brightness can be adjusted.

9.1 Explanation of each part on screen

Name and function of each part of the Setting Value screen.

Press the [Maintenance] button to switch Setting Value screen. (Figure 4-94)



No.	Name	Content
①	Operation Mode	Switch operation mode between UCSG mode and IMO mode.
②	LCD Brightness	Adjust LCD brightness.
③	[◀] [▶] button	Switch Operation Time screen and Setting Value screen.

Figure 4-94 Setting Value screen

9.2 Change setting value

a) Operation Mode

[Operation Mode] button can be switch between IMO mode and USCG mode.

Note

Ballast water treated in USCG mode can discharge in the USCG area.

b) LCD Brightness

LCD Brightness can be adjusted in 8 steps.

Press [▶] to make it brighter, and [◀]to make it darker.

Adjust the LCD Brightness so that it is easy to use.